

ZERO FLUSH

WATERLESS URINALS

Finally!

A waterless urinal that exceeds
your expectations!

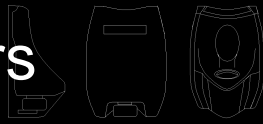
Phone: 1800 999 010

www.zeroflush.com.au

FAX: 07 5561 8107

info@zeroflush.com.au

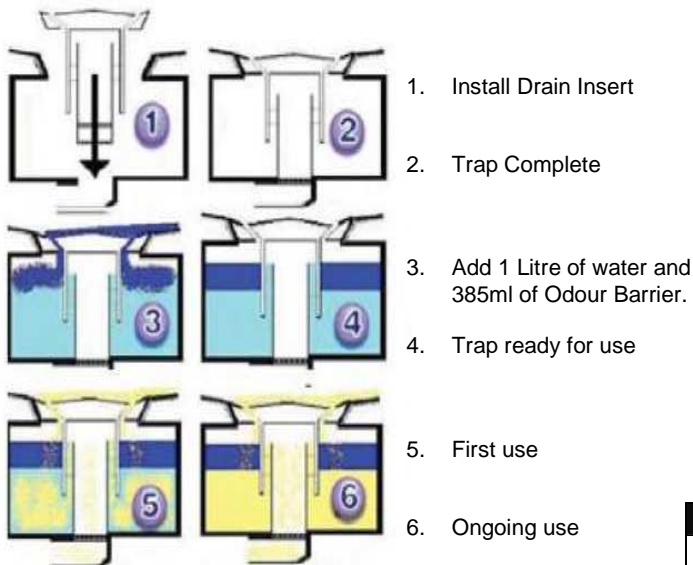
Size Matters



OUR SLEEK, MODERN DESIGN HELPS
REDUCE SPLASH AND KEEPS FLOORS DRIER



HOW DOES IT WORK?



After approximately 15000 uses, drops of blue Odour Barrier will appear on the insert cover. This indicates that it's time to replace the insert and the odour barrier liquid

LARGEST TRAP

Means more uses!
...averages 15000 uses before
maintenance

Our system's Drain Insert is disposable and easy to remove.

- Largest built in waste trap of any waterless urinal
- Averages 15000 uses before any maintenance
- No cartridges
- Odour free
- No need to add odour barrier between insert changes
- Easiest to maintain and clean
- Lowest operational and maintenance cost
- No water or sewer cost
- Quickest return on investment
- All natural ZeroFlush Odour Barrier
- Improved design reduces splash
- Easy installation and retrofit
- Vitreous China and Stainless Steel

ODOUR BARRIER REPLACEMENT KIT

- Drain Insert
- Insert Removal Key
- ZeroFlush Odour Barrier



Maintenance & Cleaning



ODOUR FREE

ZeroFlush waterless urinals are the culmination of proven technology, environmental concern and innovation. Our patented system will give you years of odour free superior performance and trouble free operation- improving total restroom sanitation and hygiene.

ZeroFlush has been developed to be the most economical and environmentally-friendly waterless urinal in the world today



SCREW THE ZEROFLUSH TRAP INSERT REMOVAL KEY INTO THE HOLE OF THE DRAIN INSERT



PULL UPWARD ON KEY TO REMOVE INSERT



RINSE THE OPEN TRAP WITH WATER



REPLACE THE NEW INSERT, PRESS DOWN UNTIL YOU FEEL AND HEAR A SLIGHT POPPING SOUND



POUR 1 LITRE OF WATER INTO THE URINAL



POUR IN ONE 385ML BOTTLE OF ODOUR BARRIER AND WIPE CLEAN BOWL

“Maintenance is a cinch!”

Remove the drain insert with the tool provided. You’ll notice the remaining odour barrier and any urine inside the waste trap will begin to automatically drain down the waste pipe. Rinse the waste line and housing with a bucket of water. Install the new drain insert into the housing. Pour in 1 Litre of water and 385ml of ZeroFlush Odour Barrier fluid through the drain insert and the urinal is ready for use. At no time will the person replacing the odour barrier fluid come into contact with urine.

DAILY CLEANING

As with any other urinal (water and no water), ZeroFlush urinals should be cleaned on a regular basis.

The ZeroFlush urinals are designed with the maintenance person in mind, cleaning is very quick and easy.

No scrubbing with detergents is required or the use of odour masking chemicals or devices



N **O MORE**

Leaky Valves, Hard Water Stains, Urinal Cakes, Multiple Wasteful Flushing, Overflows, Floods or Harsh Chemicals

Environmentally Friendly



ZF-101

ZF-201

ZF-301*



ZF-401

ZFT-120/140*

ZF-501

Remarkable Savings...

Water Is Precious.

The average swimming pool contains 60,000 litres of water.

Amazingly, one ZeroFlush urinal can save 3 swimming pools worth of water in a single year.

ZeroFlush Urinals help reduce the growing amount of sewage to save our already heavily taxed wastewater infrastructure.

MODELS

ZeroFlush Model ZF-101

Vitreous China Waterless Urinal with integral housing and drain insert
 Dimensions: 483mm W x 712mm H x 394mm D
 Rough In: For 600mm Lip Height, Drain centre must be 400mm from floor
 Approximate Weight: 27.3kg Colour: White

ZeroFlush Model ZF-201

Vitreous China Waterless Urinal with integral housing and drain insert
 Dimensions: 404mm W x 630mm H x 394mm D
 Rough In: For 600mm Lip Height, Drain centre must be 400mm from floor
 Approximate Weight: 18.2kg Colour: White

ZeroFlush Model ZF-301

Stainless Steel Anti-Vandal Waterless Urinal with integral housing and drain insert
 Dimensions: 476mm W x 788mm H x 381mm D
 Rough In: For 600mm Lip Height, Drain centre must be 325mm from floor
 Approximate Weight: 18.2kg Colour: Stainless Steel 306

ZeroFlush Model ZF-401

Vitreous China Waterless Urinal with integral housing and drain insert
 Dimensions: 400mm W x 711mm H x 356mm D
 Rough In: For 600mm Lip Height, Drain centre must be 390mm from floor
 Approximate Weight: 20.5kg Colour: White

ZeroFlush Model ZF-501

Vitreous China Waterless Urinal with integral housing and drain insert
 Dimensions: 338mm W x 500mm H x 327mm D
 Rough In: For 600mm Lip Height, Drain centre must be 410mm from floor
 Approximate Weight: 13.5kg Colour: White



* ZF-301 AND ZFT-120/140 not currently for sale in Australia



WaterMark

ATS 5200.459

Cert WMKT22084

IAPMO R&T OCEANA



GreenPlumbers®

CREATING SUSTAINABLE COMMUNITIES

Phone: 1800 999 010

www.zeroflush.com.au

FAX: 07 5561 8107

info@zeroflush.com.au